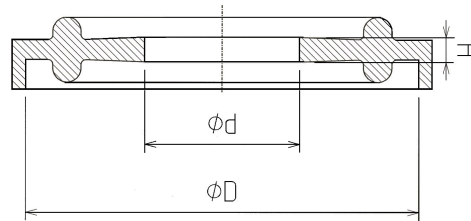


**ISO 1127**



ISO 1127

DN	d BORE	Ø D	Ø H	FLANGE DIA.	EPDM	VMQ	FPM	PTFE
8	10,3	34	2,1	34				
	13,5	34	2,1	34				
15/1	18,1	34	2,1	34		*		
		34	2,1	34	*	*		
8	10,5	50,5	2,1	50,5	*	*		
10	13,5	50,5	2,1	50,5				*
10	14,2	50,5	2,1	50,5	*	*		
15	18,3	50,5	2,1	50,5	*	*		*
20	22,9	50,5	2,1	50,5				
20	23,9	50,5	2,1	50,5	*	*		*
25	29,9	50,5	2,1	50,5	*	*		*
33,7	30,5	50,5	2,1	50,5				
33,7	31,1	50,5	2,1	50,5				
		50,5	2,1	50,5	*	*		
32	38,6	64	2,1	64	*	*		*
40	44,5	64	2,1	64	*	*	*	*
50	50,3	77,5	2,1	77,5				
50	56,5	77,5	2,1	77,5	*	*		*
		77,5	2,1	77,5	*			
65	72,3	91	2,1	91	*	*		
65	72,9	91	2,1	91				
		91	2,1	91	*			
80	80,2	106	2,1	106				
80	84,5	106	2,1	106	*	*		
100	109,9	130	2,1	130	*	*		
150	163,3	182,7	2,1	182,7	*	*		
200	214,1	233,5	2,1	233,5	*	*		
250	266,5	287,5	2,1	287,5	*	*		
300	316,1	338,3	2,1	338,3	*	*		

\* Elastomers available

**Ordering example:** DIN-Nr. + DN + Elastomer (ISO 1127 15/1 VMQ)

**Elastomers available:**

**Elastomer:** EPDM - EPDM/400  
 FDA CFR21:177.2600/USP Class VI  
**Colour:** Black

**Elastomer:** VMQ PLATINUM - VMQ/600  
 FDA CFR21:177.2600/USP Class VI  
**Colour:** Transparent

**Elastomer:** FPM - FPM/300  
 FDA CFR21:177.2600/USP Class VI  
**Colour:** Green

**Material:** PTFE  
 FDA CFR21:177.2600  
**Colour:** White

**WARNING:** Limits of application stated herein are standard values. They could be individually transgressed with due consideration to respective service conditions. In the event of a large duty cycle, pulsating operation and other complex operational conditions, simultaneous transgression of these values is not recommended. Due to a large variety of service conditions that may arise in course of actual use, the company does not take responsibility of or guarantee the functional accuracy of the individual components. Rights for changes are reserved.