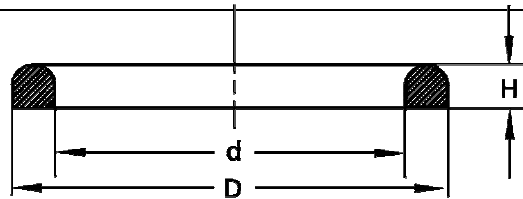


GASKET SELECTION GUIDE

The choice of seal material will depend on the material being processed and the operating conditions. The table below is a general guidance on seal material selection. If any doubt please contact our sales office.

- EPDM:** Resistance is good to alcohol, ketones, mineral acids and alkalis. Especially suitable for CIP. Not suitable for use with oils and hydrocarbons. Temperature range from -50 °C to 150 °C.
- FPM:** Particularly resistant to acids, solvents and most commonly used chemicals in the food industry. Unsuitable for ketones, esters, hot concentrated caustic solutions, and steam. Temperature range from -30 °C to 200 °C.
- NBR:** Resistance is good to oils, mineral fats and water. Not recommended for CIP. Temperature range -40 °C to 100 °C.
- VMQ:** High chemical resistance to most media encountered in the food industry. Good resistance to oxidising agents, alkali solutions, and animal/vegetable fats. Not recommended for strong acids and bases. Temperature range from -60 °C to 200 °C.
- PTFE:** Almost universal chemical inertness. Suffers from cold flow and hence must not be over tightened. Temperature range from -100 °C to 250 °C.
- KALREZ:** Almost universal chemical inertness. Especially suitable for CIP, SIP and WFI systems. Temperature range -20 °C to 260 °C.
- ENVELOPE:** Almost universal chemical inertness. This gasket is a composite construction being a PTFE outer case, in contact with the media, and a FPM filler that provides elasticity. Temperature range from -30 °C to 200 °C.

DIN 11851



DIN 11857

DN	d BORE	Ø D	Ø H	UNION NUT DIA	EPDM	FPM	PTFE	NBR
10	12	20	4,5	38	*	*		*
15	18	26	4,5	44	*	*		*
20	23	33	4,5	54	*	*	*	
25	30	40	5	63	*	*	*	*
32	36	46	5	70	*			
40	42	52	5	78	*	*	*	*
50	54	64	5	92	*	*	*	*
65	71	81	5	112	*	*		*
80	85	95	5	127	*	*	*	*
100	104	114	6	148	*	*	*	*
125	130	142	7	178	*			*
150	155	167	7	210	*	*		

* Elastomers available

Ordering example: DIN-Nr + DN + Elastomer (DIN 11857 10 EPDM)

Elastomers available:

Elastomer: EPDM
 FDA CFR21:177.2600
 Colour: Black

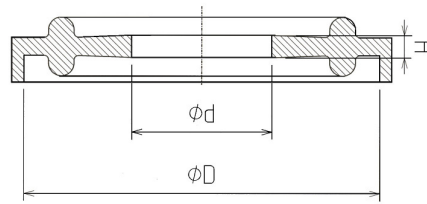
Elastomer: FPM
 FDA CFR21:177.2600
 Colour: Black

Elastomer: NBR
 FDA CFR21:177.2600
 Colour: Blue

Material: PTFE
 FDA CFR21:177.1550
 Colour: White

WARNING: Limits of application stated herein are standard values. They could be individually transgressed with due consideration to respective service conditions. In the event of a large duty cycle, pulsating operation and other complex operational conditions, simultaneous transgression of these values is not recommended. Due to a large variety of service conditions that may arise in course of actual use, the company does not take responsibility of or guarantee the functional accuracy of the individual components. Rights for changes are reserved.

DIN 32676



DIN 32676

DN	d BORE	Ø D	Ø H	FLANGE DIA.	EPDM	VMQ	VMQ	FPM	NBR	PTFE
6	6,2	34	2,1	34			*			
8	8,2	34	2,1	34			*			
10	10,2	34	2,1	34	*	*	*	*		*
15	16,2	34	2,1	34	*	*	*	*		*
20	20,2	34	2,1	34	*	*	*	*	*	*
		34	2,1	34	*		*			
25	26,2	50,5	2,1	50,5	*	*	*	*		*
32	32,2	50,5	2,1	50,5	*		*	*		*
40	38,2	50,5	2,1	50,5	*	*	*	*		*
		50,5	2,1	50,5	*		*			*
50	50,2	64	2,1	64	*	*	*	*		*
65	66,2	91	2,1	91	*	*	*	*		
		91	2,1	91	*					
80	81,2	106	2,1	106	*	*	*		*	
100	100,2	119	2,1	119	*	*	*	*		
115	110,3	130	2,1	130						
125	125,2	155	2,1	155	*					
150	150,2	183	2,1	183	*			*		
200	200	233,5	2,1	233,5	*					
250	267,8	286,1	2,1	286,1						
300	318,7	338,5	2,1	338,5						

* Elastomers available

Ordering example: DIN-Nr + DN + Elastomer (DIN 32676 6 VMQ)

Elastomers available:

Elastomer: EPDM – EPDM/400
 FDA CFR21:177.2600/USP Class VI
 Colour: Black

Elastomer: VMQ
 FDA CFR21:177.2600
 Colour: White

Elastomer: NBR
 FDA CFR21:177.2600
 Colour: Black

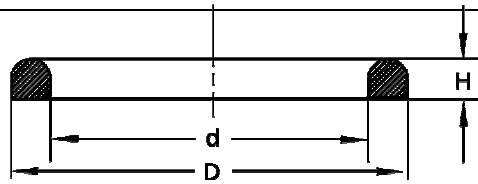
Elastomer: VMQ/PLATINUM – VMQ/600
 FDA CFR21:177.2600/USP Class VI
 Colour: Transparent

Elastomer: FPM – FPM/300
 FDA CFR21:177.2600/USP Class VI
 Colour: Green

Material: PTFE
 FDA CFR21:177.1550
 Colour: White

WARNING: Limits of application stated herein are standard values. They could be individually transgressed with due consideration to respective service conditions. In the event of a large duty cycle, pulsating operation and other complex operational conditions, simultaneous transgression of these values is not recommended. Due to a large variety of service conditions that may arise in course of actual use, the company does not take responsibility of or guarantee the functional accuracy of the individual components. Rights for changes are reserved.

DS



DS

DN	d BORE	Ø D	Ø H	UNION NUT DIA.	EPDM	VMQ	FPM	NBR	PTFE
25	25	31,8	4,5	57	*		*	*	*
38	38	46,8	4,5	71	*	*	*	*	*
51	51	58,7	4,5	86	*	*	*	*	*
63,5	63,5	74,2	4,5	103	*		*	*	*
76,1	76,1	87,6	4,5	115	*	*	*	*	*
101,6	101,6	112,1	4,5	147	*		*	*	*

* Elastomers available

Ordering example: DIN-Nr. + DN + Elastomer (DS 25 EPDM)

Elastomers Available:

Elastomer: EPDM – EPDM/400
 FDA CFR21:177.2600/USP Class VI
Colour: Black

Elastomer: VMQ PLATINUM – VMQ/600
 FDA CFR21:177.2600/USP Class VI
Colour: Transparent

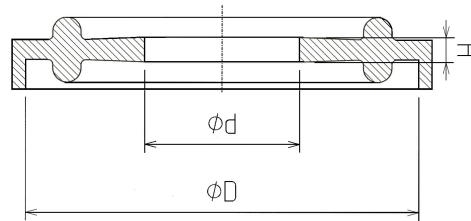
Elastomer: NBR
 FDA CFR21:177.2600
Colour: Black

Material: PTFE
 FDA CFR21:177.1550
Colour: White

Elastomer: FPM
 FDA CFR21:177.2600
Colour: Black

WARNING: Limits of application stated herein are standard values. They could be individually transgressed with due consideration to respective service conditions. In the event of a large duty cycle, pulsating operation and other complex operational conditions, simultaneous transgression of these values is not recommended. Due to a large variety of service conditions that may arise in course of actual use, the company does not take responsibility of or guarantee the functional accuracy of the individual components. Rights for changes are reserved.

ISO 1127



ISO 1127

DN	d BORE	Ø D	Ø H	FLANGE DIA.	EPDM	VMQ	FPM	PTFE
8	10,3	34	2,1	34				
	13,5	34	2,1	34				
15/1	18,1	34	2,1	34		*		
		34	2,1	34	*	*		
8	10,5	50,5	2,1	50,5	*	*		
10	13,5	50,5	2,1	50,5				*
10	14,2	50,5	2,1	50,5	*	*		
15	18,3	50,5	2,1	50,5	*	*		*
20	22,9	50,5	2,1	50,5				
20	23,9	50,5	2,1	50,5	*	*		*
25	29,9	50,5	2,1	50,5	*	*		*
33,7	30,5	50,5	2,1	50,5				
33,7	31,1	50,5	2,1	50,5				
		50,5	2,1	50,5	*	*		
32	38,6	64	2,1	64	*	*		*
40	44,5	64	2,1	64	*	*	*	*
50	50,3	77,5	2,1	77,5				
50	56,5	77,5	2,1	77,5	*	*		*
		77,5	2,1	77,5	*			
65	72,3	91	2,1	91	*	*		
65	72,9	91	2,1	91				
		91	2,1	91	*			
80	80,2	106	2,1	106				
80	84,5	106	2,1	106	*	*		
100	109,9	130	2,1	130	*	*		
150	163,3	182,7	2,1	182,7	*	*		
200	214,1	233,5	2,1	233,5	*	*		
250	266,5	287,5	2,1	287,5	*	*		
300	316,1	338,3	2,1	338,3	*	*		

* Elastomers available

Ordering example: DIN-Nr. + DN + Elastomer (ISO 1127 15/1 VMQ)

Elastomers available:

Elastomer: EPDM - EPDM/400
 FDA CFR21:177.2600/USP Class VI
Colour: Black

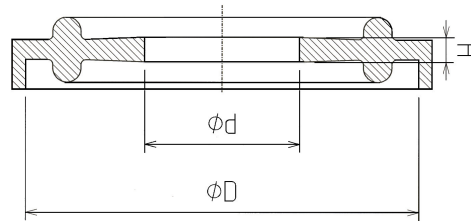
Elastomer: VMQ PLATINUM - VMQ/600
 FDA CFR21:177.2600/USP Class VI
Colour: Transparent

Elastomer: FPM - FPM/300
 FDA CFR21:177.2600/USP Class VI
Colour: Green

Material: PTFE
 FDA CFR21:177.2600
Colour: White

WARNING: Limits of application stated herein are standard values. They could be individually transgressed with due consideration to respective service conditions. In the event of a large duty cycle, pulsating operation and other complex operational conditions, simultaneous transgression of these values is not recommended. Due to a large variety of service conditions that may arise in course of actual use, the company does not take responsibility of or guarantee the functional accuracy of the individual components. Rights for changes are reserved.

ISO 2852



ISO 2852

DN	d BORE	Ø D	Ø H	FLANGE DIA.	EPDM	VMQ	VMQ/600	FPM	NBR	PTFE	ENVELOPE	KALREZ
12,7	10,9	34	2,1	34								
17,2	15,4	34	2,1	34								
21,3	19,5	34	2,1	34								
		34	2,1	34	*		*					
25	22,8	50,5	2,1	50,5	*	*	*	*	*	*	*	*
33,7	31,5	50,5	2,1	50,5								
38	35,8	50,5	2,1	50,5	*	*	*	*	*	*	*	*
		50,5	2,1	50,5	*		*			*		
40	37,8	64	2,1	64								
51	48,8	64	2,1	64	*	*	*	*	*	*	*	*
63,5	60,5	77,5	2,1	77,5	*	*	*	*	*	*	*	*
		77,5	2,1	77,5	*							
70	67	91	2,1	91								
76,1	73,1	91	2,1	91	*	*	*	*	*	*	*	
		91	2,1	91	*							
88,9	85,1	106	2,1	106	*					*		
101,6	97,8	119	2,1	119	*	*	*	*	*	*	*	
114,3	110,5	130	2,1	130	*		*					
127	120,2	144,5	2,1	144,5	*		*					
139,7	135,9	155	2,1	155								
152,4	147,2	167	2,1	167	*		*					
168,3	163,3	183	2,1	183	*					*		
203,2	198,2	217,5	2,1	217,5	*		*					
219,1	214,1	233,5	2,1	233,5	*				*	*	*	
254	250,2	268	2,1	268	*		*					

* Elastomers available

Ordering example: ISO-Nr. + DN + Elastomer (ISO 2852 25 VMQ/600)

Elastomers available:

Elastomer: EPDM - EPDM/400
 FDA CFR21:177.2600/USP Class VI
 Colour: Black

Elastomer: NBR - NBR/001
 FDA CFR21:177.2600/USP Class VI
 Colour: Black

Elastomer: FPM – FPM/300
 FDA CFR21:177.2600/USP Class VI
 Colour: Green

Elastomer: VMQ PLATINUM - VMQ/600
 FDA CFR21:177.2600/USP Class VI
 Colour: Transparent

Elastomer: ENVELOPE PTFE/FPM
 FDA CFR21:177.1550
 Colour: White / Black

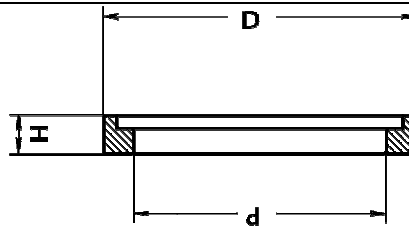
Material: PTFE
 FDA CFR21:177.1550
 Colour: White

Elastomer: KALREZ 6230 3A Sanitary
 FDA CFR21:177.2600/USP Class VI
 Colour: Black

Elastomer: VMQ
 FDA CFR21:177.2600
 Colour: White

WARNING: Limits of application stated herein are standard values. They could be individually transgressed with due consideration to respective service conditions. In the event of a large duty cycle, pulsating operation and other complex operational conditions, simultaneous transgression of these values is not recommended. Due to a large variety of service conditions that may arise in course of actual use, the company does not take responsibility of or guarantee the functional accuracy of the individual components. Rights for changes are reserved.

ISO 2853



ISO 2853

DN	d BORE	Ø D	Ø H	UNION NUT DIA.	EPDM	FPM	NBR
25	23,6	32,5	6	48	*	*	*
38	36,6	46	6	64	*	*	*
51	49,6	59,5	6	77	*	*	*
63,5	61,3	73,2	6	91	*	*	*
76,1	73,9	86,5	6	106	*	*	*
101,6	98,6	112,5	6	135	*	*	*

* Elastomers available

Ordering example: ISO-Nr. + DN + Elastomer (ISO 2853 25 FPM)

Elastomers available:

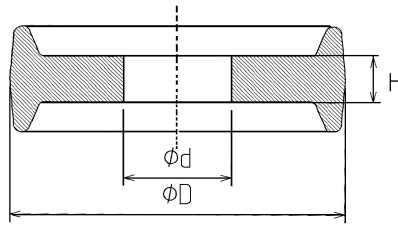
Elastomer: EPDM - EPDM/400
 FDA CFR21:177.2600/USP Class VI
Colour: Black

Elastomer: FPM
 FDA CFR21:177.2600
Colour: Black

Elastomer: NBR - NBR/001
 FDA CFR21:177.2600/USP Class VI
Colour: Black

WARNING: Limits of application stated herein are standard values. They could be individually transgressed with due consideration to respective service conditions. In the event of a large duty cycle, pulsating operation and other complex operational conditions, simultaneous transgression of these values is not recommended. Due to a large variety of service conditions that may arise in course of actual use, the company does not take responsibility of or guarantee the functional accuracy of the individual components. Rights for changes are reserved.

MINI CLAMP



MINI CLAMP

DN	d BORE	Ø D	Ø H	FLANGE DIA.	EPDM	VMQ	VMQ/600	FPM	PTFE	ENVELOPE	KALREZ
	3,05	21,84	2	25,4							
4	4	21,84	2	25,4	*						
4/1	4,2	21,84	2	25,4	*						
6	4	21,84	2	25,4							
8/1	6	21,84	2	25,4	*		*		*		
10/3	8	21,84	2	25,4					*		
8/2	8	21,84	2	25,4	*			*			
8/4	8,2	21,84	2	25,4	*		*				
12,7/1	9,6	21,84	2	25,4	*		*				
10/2	10	21,84	2	25,4	*			*			
12/2	10	21,84	2	25,4					*	*	
12,7	10,55	21,84	2	25,4	*	*		*	*		*
8/3	10,55	21,84	2	25,4	*						
12/1	12	21,84	2	25,4	*			*			
14/1	12	21,84	2	25,4					*		
10/1	12,3	21,84	2	25,4	*						
13	13	21,84	2	25,4	*						
14/2	14	21,84	2	25,4	*			*			
14/3	14,2	21,84	2	25,4	*		*				
19,05	15,9	21,84	2	25,4	*	*	*	*			*
18/1	16	21,84	2	25,4	*			*	*	*	
		21,84	2	25,4	*				*		

* Elastomers available

Ordering example: MINI CLAMP + DN + Elastomer (MINI CLAMP 10/3 PTFE)

Elastomers available:

Elastomer: EPDM - EPDM/400
 FDA CFR21:177.2600/USP Class VI

Colour: Black

Elastomer: FPM - FPM/300
 FDA CFR21:177.2600/USP Class VI

Colour: Green

Elastomer: VMQ
 FDA CFR21:177.2600

Colour: White

Materiale: VMQ PLATINUM - VMQ/600
 FDA CFR21:177.2600/USP Class VI

Colour: Transparent

Elastomer: ENVELOPE PTFE/FPM
 FDA CFR21:177.1550

Colour: White / Black

Material: PTFE
 FDA CFR21:177.1550

Colour: White

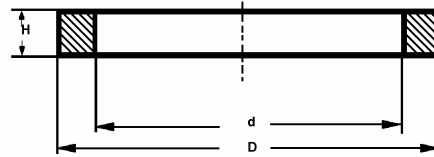
Elastomer: KALREZ 6230
 FDA CFR21:177.2600/USP Class VI

3A Sanitary

Colour: Balck

WARNING: Limits of application stated herein are standard values. They could be individually transgressed with due consideration to respective service conditions. In the event of a large duty cycle, pulsating operation and other complex operational conditions, simultaneous transgression of these values is not recommended. Due to a large variety of service conditions that may arise in course of actual use, the company does not take responsibility of or guarantee the functional accuracy of the individual components. Rights for changes are reserved.

SMS 1149



SMS 1149

DN	d BORE	Ø D	Ø H	UNION NUT DIA.	EPDM	FPM	NBR	PTFE
25	25	32	5,5	51	*	*	*	*
32	32	40	5,5		*			*
*38	38	48	5,5	74	*	*	*	*
51	51	61	5,5	84	*	*	*	*
63,5	63,5	73,5	5,5	100	*	*	*	*
76	76	86	5,5	114	*	*	*	*
101,6	101,6	113,5	5,5	154	*	*	*	

* Elastomers available

Ordering example: SMS-Nr. + DN + Elastomer (SMS 1149 25 NBR)

Elastomers available:

Elastomer: EPDM - EPDM/400
 FDA CFR21:177.2600/USP Class VI
 Colour: Black

Elastomer: FPM
 FDA CFR21:177.2600
 Colour: Black

Elastomer: NBR
 FDA CFR21:177.2600
 Colour: Black

Material: PTFE
 FDA CFR21:177.1550
 Colour: White

WARNING: Limits of application stated herein are standard values. They could be individually transgressed with due consideration to respective service conditions. In the event of a large duty cycle, pulsating operation and other complex operational conditions, simultaneous transgression of these values is not recommended. Due to a large variety of service conditions that may arise in course of actual use, the company does not take responsibility of or guarantee the functional accuracy of the individual components. Rights for changes are reserved.