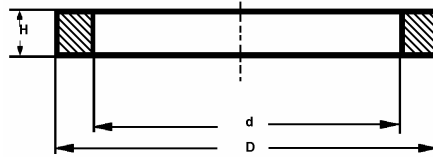


SMS 1149



SMS 1149

DN	d BORE	Ø D	Ø H	UNION NUT DIA.	EPDM	FPM	NBR	PTFE
25	25	32	5,5	51	*	*	*	*
32	32	40	5,5		*			*
*38	38	48	5,5	74	*	*	*	*
51	51	61	5,5	84	*	*	*	*
63,5	63,5	73,5	5,5	100	*	*	*	*
76	76	86	5,5	114	*	*	*	*
101,6	101,6	113,5	5,5	154	*	*	*	

* Elastomers available

Ordering example: SMS-Nr. + DN + Elastomer (SMS 1149 25 NBR)

Elastomers available:

Elastomer: EPDM - EPDM/400
 FDA CFR21:177.2600/USP Class VI
 Colour: Black

Elastomer: FPM
 FDA CFR21:177.2600
 Colour: Black

Elastomer: NBR
 FDA CFR21:177.2600
 Colour: Black

Material: PTFE
 FDA CFR21:177.1550
 Colour: White

WARNING: Limits of application stated herein are standard values. They could be individually transgressed with due consideration to respective service conditions. In the event of a large duty cycle, pulsating operation and other complex operational conditions, simultaneous transgression of these values is not recommended. Due to a large variety of service conditions that may arise in course of actual use, the company does not take responsibility of or guarantee the functional accuracy of the individual components. Rights for changes are reserved.