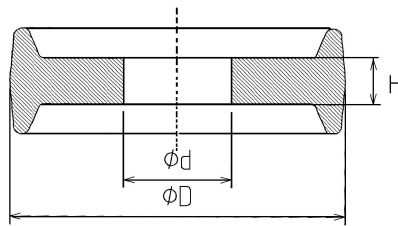


MINI CLAMP



MINI CLAMP

DN	d BORE	Ø D	Ø H	FLANGE DIA.	EPDM	VMQ	VMQ/600	FPM	PTFE	ENVELOPE	KALREZ
	3,05	21,84	2	25,4							
4	4	21,84	2	25,4	*						
4/1	4,2	21,84	2	25,4	*						
6	4	21,84	2	25,4							
8/1	6	21,84	2	25,4	*		*		*		
10/3	8	21,84	2	25,4					*		
8/2	8	21,84	2	25,4	*			*			
8/4	8,2	21,84	2	25,4	*		*				
12,7/1	9,6	21,84	2	25,4	*		*				
10/2	10	21,84	2	25,4	*			*			
12/2	10	21,84	2	25,4					*	*	
12,7	10,55	21,84	2	25,4	*	*		*	*		*
8/3	10,55	21,84	2	25,4	*						
12/1	12	21,84	2	25,4	*			*			
14/1	12	21,84	2	25,4					*		
10/1	12,3	21,84	2	25,4	*						
13	13	21,84	2	25,4	*						
14/2	14	21,84	2	25,4	*			*			
14/3	14,2	21,84	2	25,4	*		*				
19,05	15,9	21,84	2	25,4	*	*	*	*			*
18/1	16	21,84	2	25,4	*			*	*	*	
		21,84	2	25,4	*				*		

* Elastomers available

Ordering example: MINI CLAMP + DN + Elastomer (MINI CLAMP 10/3 PTFE)

Elastomers available:

Elastomer: EPDM - EPDM/400
 FDA CFR21:177.2600/USP Class VI

Colour: Black

Elastomer: FPM - FPM/300
 FDA CFR21:177.2600/USP Class VI

Colour: Green

Elastomer: VMQ
 FDA CFR21:177.2600

Colour: White

Materiale: VMQ PLATINUM - VMQ/600
 FDA CFR21:177.2600/USP Class VI

Colour: Transparent

Elastomer: ENVELOPE PTFE/FPM
 FDA CFR21:177.1550

Colour: White / Black

Material: PTFE
 FDA CFR21:177.1550

Colour: White

Elastomer: KALREZ 6230
 FDA CFR21:177.2600/USP Class VI

Colour: Balck

WARNING: Limits of application stated herein are standard values. They could be individually transgressed with due consideration to respective service conditions. In the event of a large duty cycle, pulsating operation and other complex operational conditions, simultaneous transgression of these values is not recommended. Due to a large variety of service conditions that may arise in course of actual use, the company does not take responsibility of or guarantee the functional accuracy of the individual components. Rights for changes are reserved.