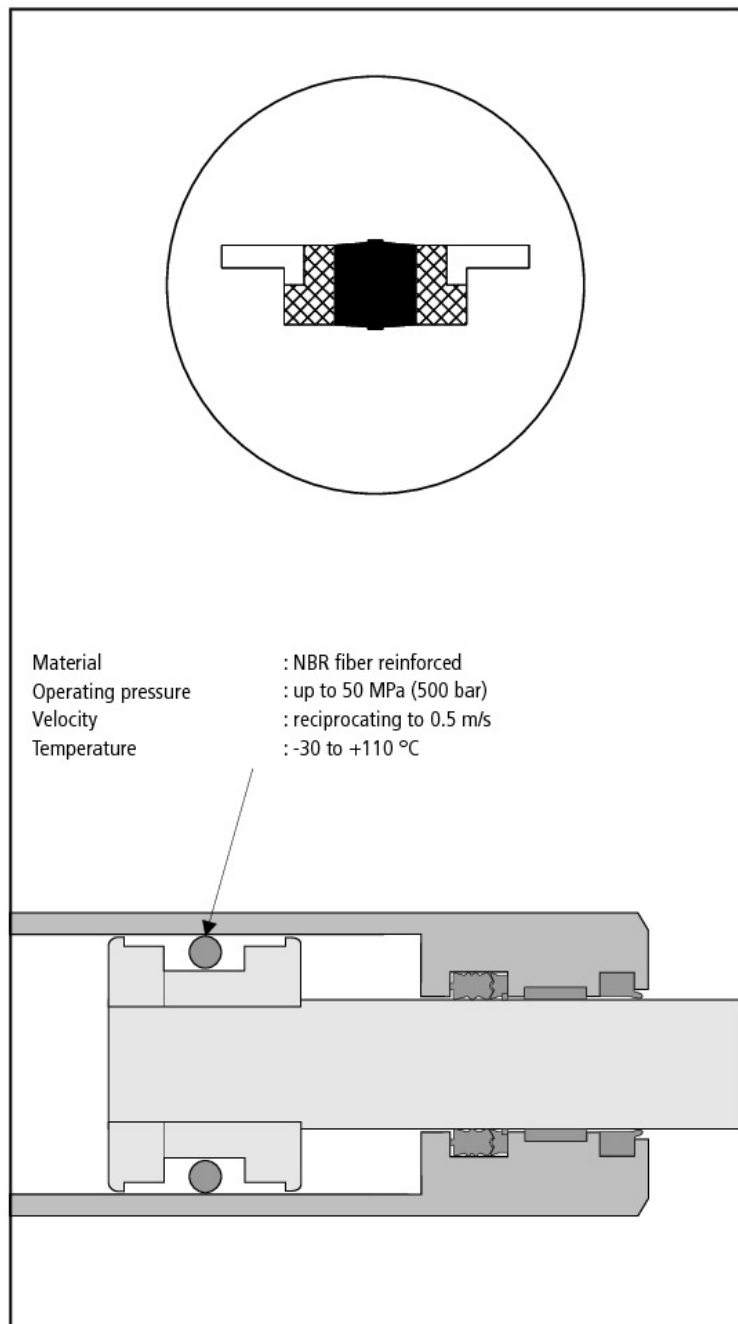
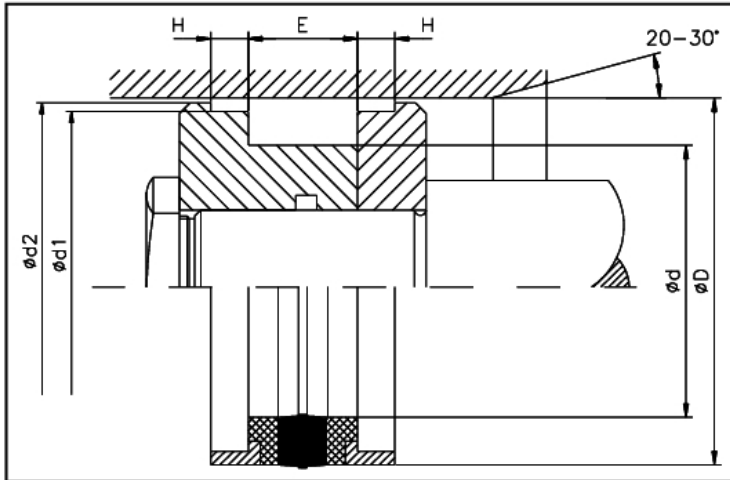


Double action piston seal HK 110 is traditionally produced in fabric reinforced rubber combinations used in intermediate to very high stress application. Larger tolerances can be chosen by using NBR fabric combinations on one hand and radial prestressing on the other. This material combination avoids split extrusion due to high impact pressure.

Special Features:

- Three part composition from fiber and elastomer reinforcing combination and POM slide ring
- Assembly on multiple part pistons
- Assured sliding due to form closed sealing component and slide rings on both sides
- Good absorption of impact pressure and vibration
- Reduced stick slip tendency due to fabric component on dynamic side
- Modified NBR resulting in high friction resistance
- Small total length
- Also available in FPM material





Limitations on Use

Operating Pressure : maximum 50 MPa (500 bar)
 Velocity : reciprocating to 0.5 m/s
 Temperature : -30 to +110 °C

Media for Use

Mineral oil based hydraulic oils, flame resistant pressure media and emulsions (HFA, HFB, HFC), Bio Oils.

Surface Finish

Surfaces	Rz	Ra
Faces	2,2 µm	0,4 µm
Groove root	4,0 µm	0,8 µm
Groove flanks or sides	8,0 µm	1,8 µm

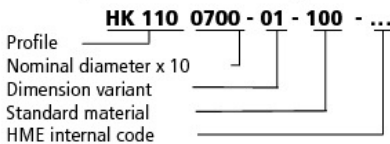
D H11	d js11	E +0,35	H +0,1	d1 h9	d2 h11	Part N°.
30,00	17,00	15,40	6,35	26,50	29,00	HK110 0300-01-100
35,00	22,00	15,40	6,35	31,40	33,70	HK110 0350-01-100
40,00	24,00	18,40	6,35	35,40	38,70	HK110 0400-01-100
45,00	29,00	18,40	6,35	40,40	43,70	HK110 0450-01-100
50,00	34,00	18,40	6,35	45,40	48,70	HK110 0500-01-100
55,00	39,00	18,40	6,35	50,40	53,70	HK110 0550-01-100
60,00	44,00	18,40	6,35	55,40	58,70	HK110 0600-01-100
63,00	47,00	19,40	6,35	58,40	61,70	HK110 0630-01-100
65,00	50,00	18,40	6,35	60,40	63,70	HK110 0650-01-100
70,00	50,00	22,40	6,35	64,20	68,30	HK110 0700-01-100
75,00	55,00	22,40	6,35	69,20	73,30	HK110 0750-01-100
75,00	56,00	24,40	6,35	69,20	73,30	HK110 0750-02-100
80,00	60,00	22,40	6,35	74,20	78,30	HK110 0800-01-100
83,00	63,00	22,40	6,35	76,16	81,30	HK110 0830-01-100
85,00	65,00	22,40	6,35	79,20	83,30	HK110 0850-01-100
90,00	70,00	22,40	6,35	84,15	88,30	HK110 0900-01-100
95,00	75,00	22,40	6,35	89,15	93,30	HK110 0950-01-100
100,00	75,00	22,40	6,35	93,15	98,05	HK110 1000-01-100
100,00	80,00	25,40	6,35	94,15	98,31	HK110 1000-02-100
105,00	80,00	22,40	6,35	98,10	103,00	HK110 1050-01-100
110,00	85,00	22,40	6,35	103,10	108,00	HK110 1100-01-100
110,00	85,00	25,40	6,35	103,10	108,00	HK110 1100-02-100
110,00	90,00	25,40	6,35	104,15	108,30	HK110 1100-03-100
115,00	90,00	22,40	6,35	108,10	113,00	HK110 1150-01-100
120,00	95,00	22,40	6,35	113,10	118,00	HK110 1200-01-100
120,00	100,00	25,40	6,35	114,10	118,30	HK110 1200-02-100
125,00	100,00	25,40	6,35	118,10	123,00	HK110 1250-01-100
125,00	100,00	32,40	6,35	118,10	123,00	HK110 1250-02-100
125,00	105,00	25,40	6,35	119,15	123,30	HK110 1250-03-100
130,00	105,00	25,40	6,35	123,10	128,00	HK110 1300-01-100
135,00	110,00	25,40	6,35	128,10	133,00	HK110 1350-01-100
140,00	115,00	25,40	6,35	133,00	138,00	HK110 1400-01-100
140,00	120,00	25,40	6,35	134,10	138,30	HK110 1400-02-100
145,00	120,00	25,40	6,35	138,30	142,95	HK110 1450-01-100
150,00	120,00	38,40	6,35	143,00	148,00	HK110 1500-01-100
150,00	125,00	25,40	6,35	143,00	148,00	HK110 1500-02-100
155,00	130,00	25,40	6,35	148,00	153,00	HK110 1550-01-100
160,00	130,00	25,40	6,35	153,00	157,90	HK110 1600-01-100
170,00	140,00	25,40	6,35	162,95	167,87	HK110 1700-01-100
180,00	160,00	31,40	6,35	172,95	177,87	HK110 1800-01-100
180,00	150,00	35,40	6,35	172,95	177,87	HK110 1800-02-100

D H11	d js11	E +0,35	H +0,1	d1 h9	d2 h11	Part N°.
190,00	160,00	35,40	6,35	182,93	187,87	HK110 1900-01-100
200,00	170,00	35,40	6,35	192,96	197,84	HK110 2000-01-100
210,00	180,00	32,40	6,35	202,72	207,87	HK110 2100-01-100
220,00	190,00	35,40	6,35	212,70	217,90	HK110 2200-01-100
250,00	220,00	35,40	6,35	242,90	247,86	HK110 2500-01-100

Above sizes/dimensions also available in FPM.

Further sizes/emperial units as well as an extensive range of inch measurement diagrams available on request.

Example for ordering Piston Seal :



Material Key:

Gasket
 100 - NBR
 120 - FPM

Issue

01	05
----	----

WARNING: Limits of application stated herein are standard values. They could be individually transgressed with due consideration to respective service conditions. In the event of a large duty cycle, pulsating operation and other complex operational conditions, simultaneous transgression of these values is not recommended. Due to a large variety of service conditions that may arise in course of actual use, the company does not take responsibility of or guarantee the functional accuracy of the individual components. Rights for changes are reserved.